

The gas separator is often an essential part of measuring systems for liquid media. It ensures a correct and reliable measurement. Gas separator is designed to eliminate a gas phase (bubbles) in the liquid before entering the meter and thereby ensures the accuracy of measurement.

GS gas separators are manufactured in accordance to all relevant standards. Thanks to the Directive 2014/32/EU (MID) certification the separator is applicable in both fiscal metering applications (where the gas separator is in many cases an obligatory part) as well as in other standard applications where the customer requires reliable and professional solution.

Construction

- GS separator uses a centrifugal principle where inlet and outlet are placed tangentially to the cylindrical vessel.
- On the top of the vessel is mounted a stainless steel air vent.
- The vessel is equipped at the bottom with a drain opening sealed by a G ¾" or 1 ½" plug.
- The device is made in accordance with EN13445, AD2000 or ASME VIII standards.

Specifications

- Certified according to PED directive 2014/68/EU
- Certified according to MID directive 2014/32/EU
- CE marked
- Seven models of the gas separator of the various capacities
- Connection flanges DN 40 to 400 or ANSI 1 ½" to 16"
- Made in Czech Republic
- Possibility of level sensors installation
- Applicable for various liquid media such as diesel, gasoline, other fuels, ethanol, water and others
- Maintenance free
- Possibility of various customisation



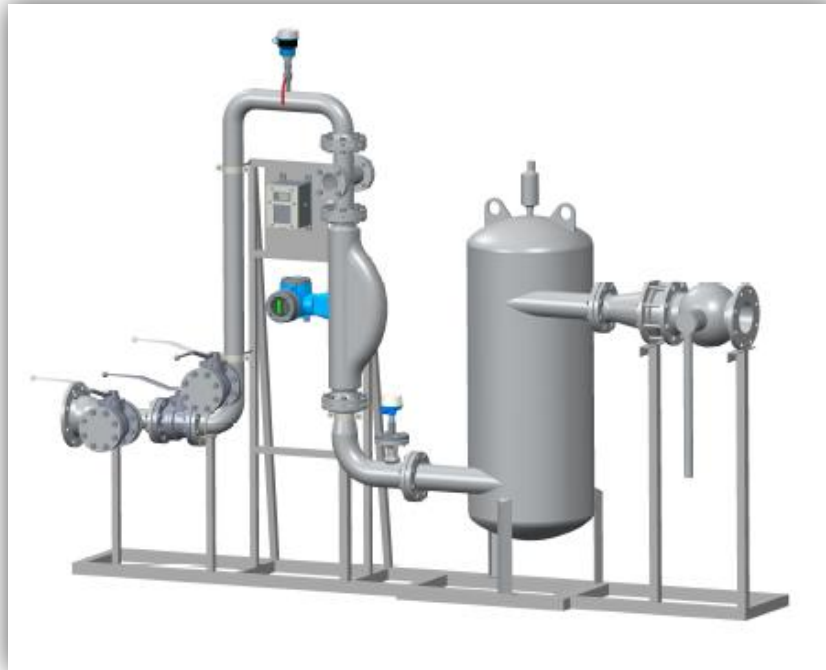
Type series and basic technical parameters

GS gas separator series is formed from seven models of a various capacities.

Model	GS-800	GS-1500	GS-2500	GS-5000	GS-10000	GS-15000	GS-25000
Volume [L]	80	170	310	720	2000	3440	5200
Effective volume [L]	43	97	190	420	1190	1870	3100
Max. flow rate [L/min]	800	1500	2500	5000	10 000	15 000	25 000
Connection flanges DN or ANSI	50 (40) 2" (1.5")	80 (100) 3" (4")	100 (80) 4" (3")	150 (200) 6" (8")	200 (250) 8" (10")	250 (200) 10" (8)	300 (400) 12" (16")
Air vent valve	11-AV	11-AV	11-AV	13-AV	6-AV	6-AV	2 x 6-AV
Max. pressure [MPa]	1.0 or 1.6 *						
Oper. temperature [°C]	-20 / 50 *						
Pressure drop Q_{max} [MPa]	0,008			0,007		0,006	
Weight [kg] (PN10)	50	102	148	259	600	1060	1377

Note *: Higher maximum pressure and larger operating temperature range are possible

Typical installation of the gas separator in the loading measuring system



Design alternatives

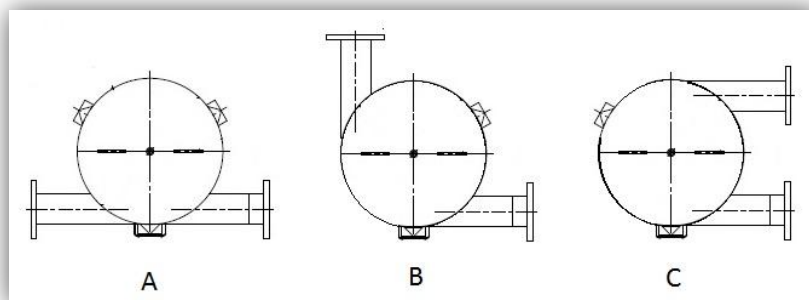
The device can be highly customized. GS can be provided in various modifications of the design and with additional features. Most of them are provided in basic price without any additional cost.

Design options

Basic design

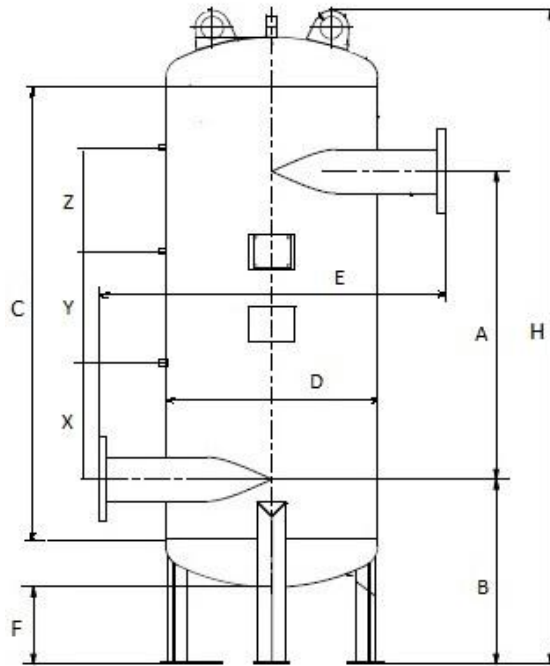
Design options	Basic design			
Material	carbon steel	stainless steel		others on demand
Pressure class	PN 10 bar	PN 16 bar		others on demand
Oper. temperature	(-20 / 50) °C			others on demand
Thread for level sensors	without	3 x G 3/4"	3 x G 1"	others on demand
Positions of inlet / outlet *	A	B	C	others on demand
Flanges dimension	DN	ANSI		
Coating colour	Grey	According to customer request		

* See the following picture



Position of inlet / outlet

Dimensions



Model / dimension [mm]	GS-800	GS-1500	GS-2500	GS-5000	GS-10000	GS-15000	GS-25000
Ø D	355	450	550	750	1100	1300	1500
H	1129	1470	1700	2134	2858	3280	3763
E	570	740	900	1110	1550	1700	2000
A	430	610	800	950	1250	1410	1750
B	380	460	480	600	700	820	850
C	730	985	1175	1450	1900	2200	2600
F	170	200	200	200	200	200	200
X	170	270	380	440	550	560	750
Y and Z	140	190	240	300	410	500	600